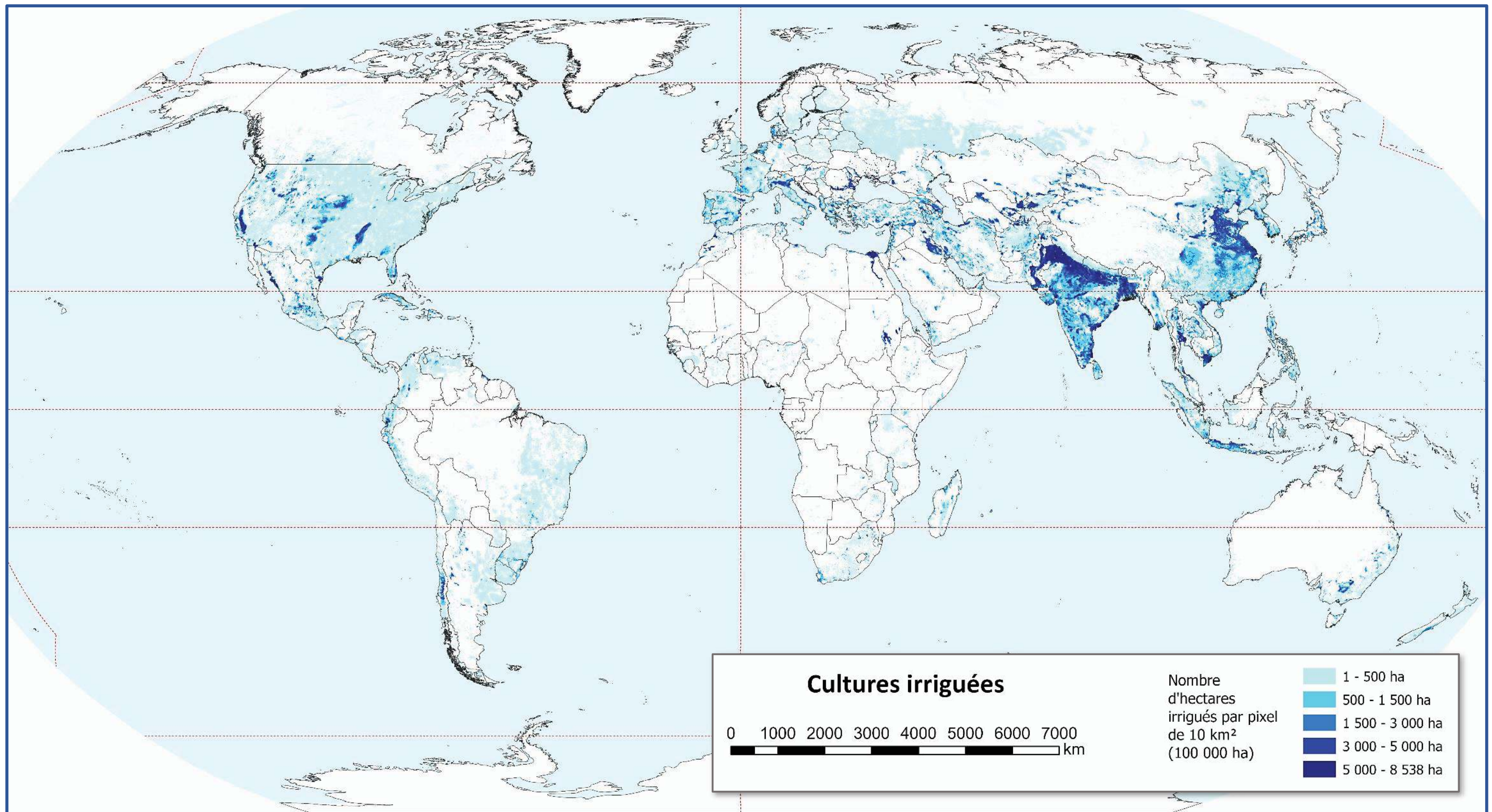


SOURCE DES DONNÉES

FAO (Organisation des Nations Unies pour l'alimentation et l'agriculture), 2024
<https://www.fao.org/interactive/hunger-map/fr/>

AUTEUR DE LA CARTE

Loïc GISCHER

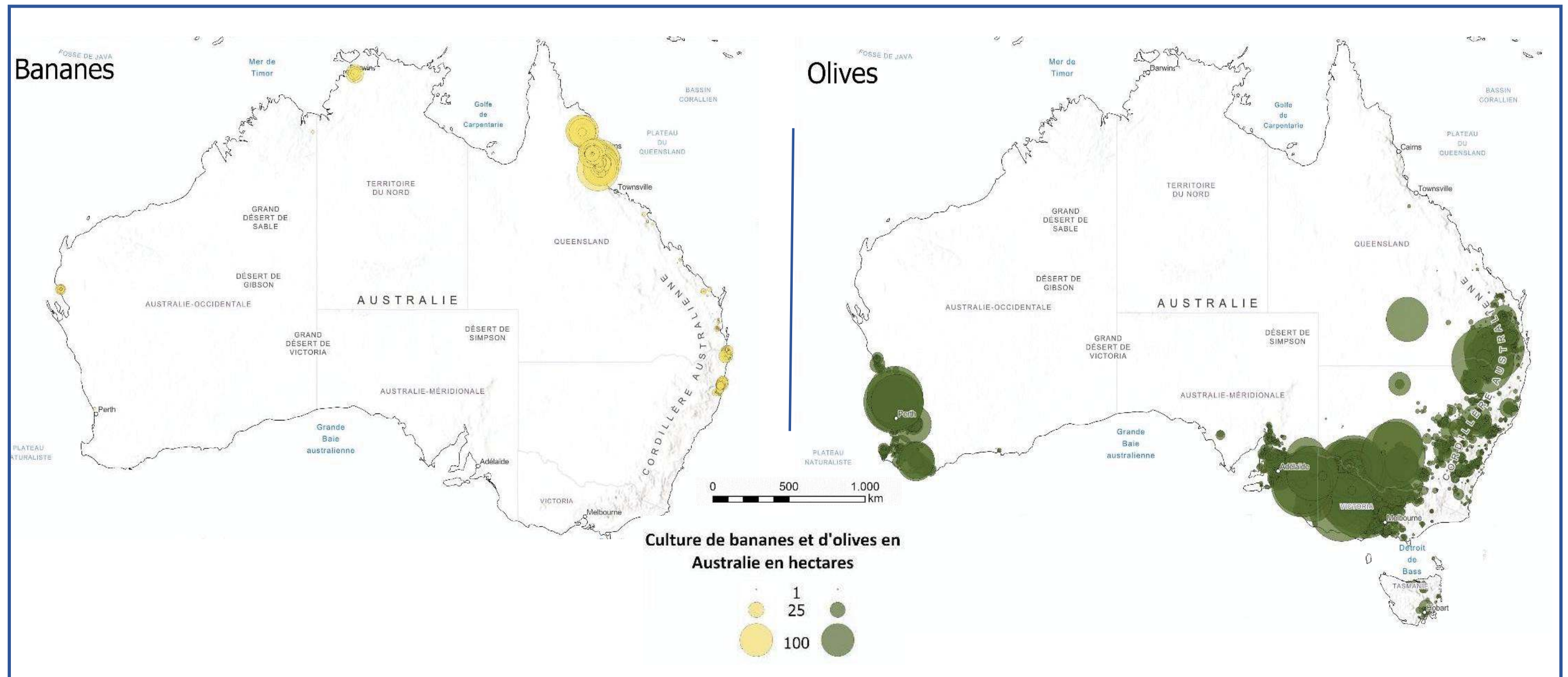


SOURCE DES DONNÉES

Nature Water 2 (2024), pp. 254-261, *Half of 21st century global irrigation expansion has been in water-stressed regions.*

AUTEUR DE LA CARTE

Marc DEPRez

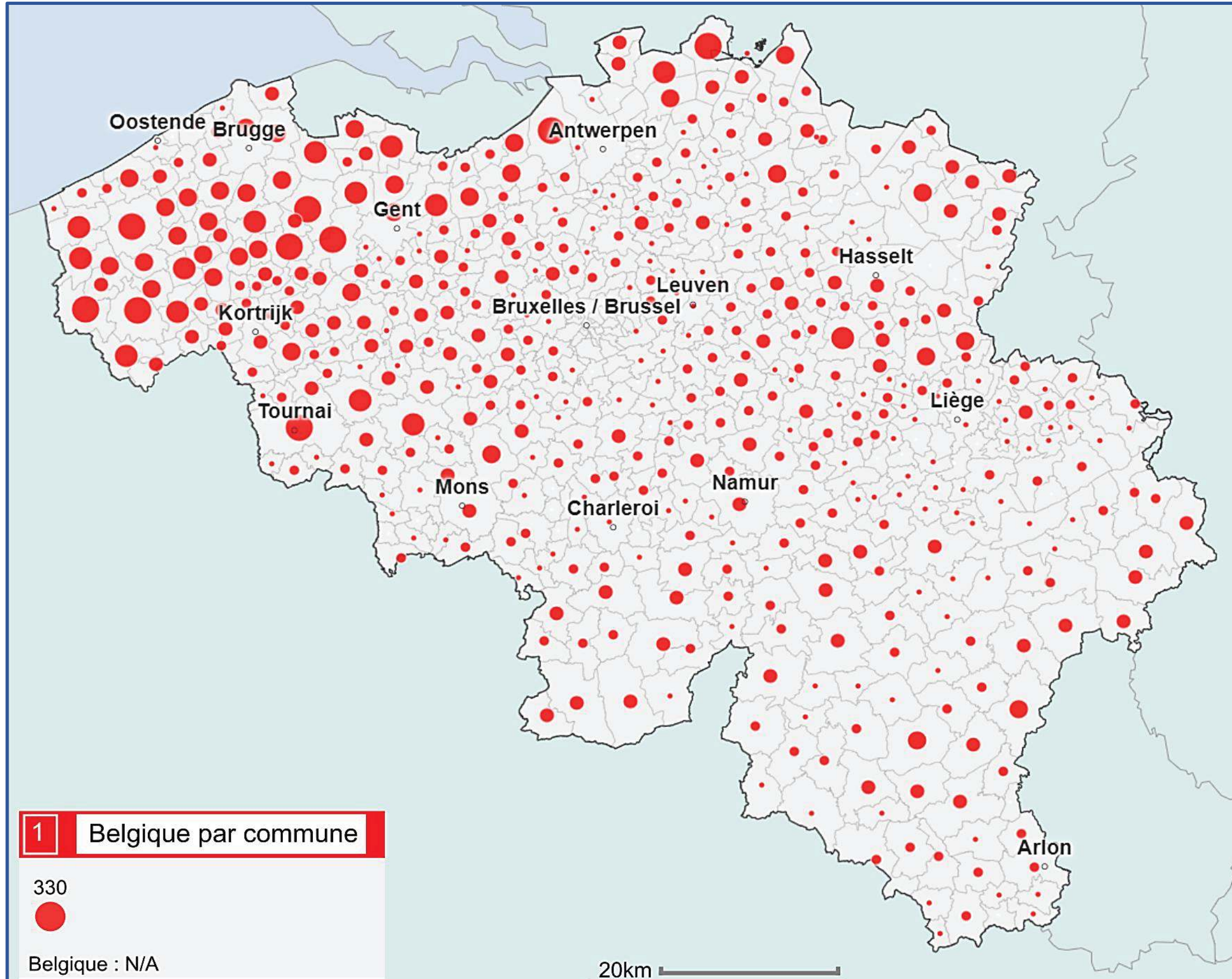


SOURCE DES DONNÉES

Applied Agricultural Remote Sensing Center, University of New England, Australia

AUTEUR DE LA CARTE

Loïc GISCHER

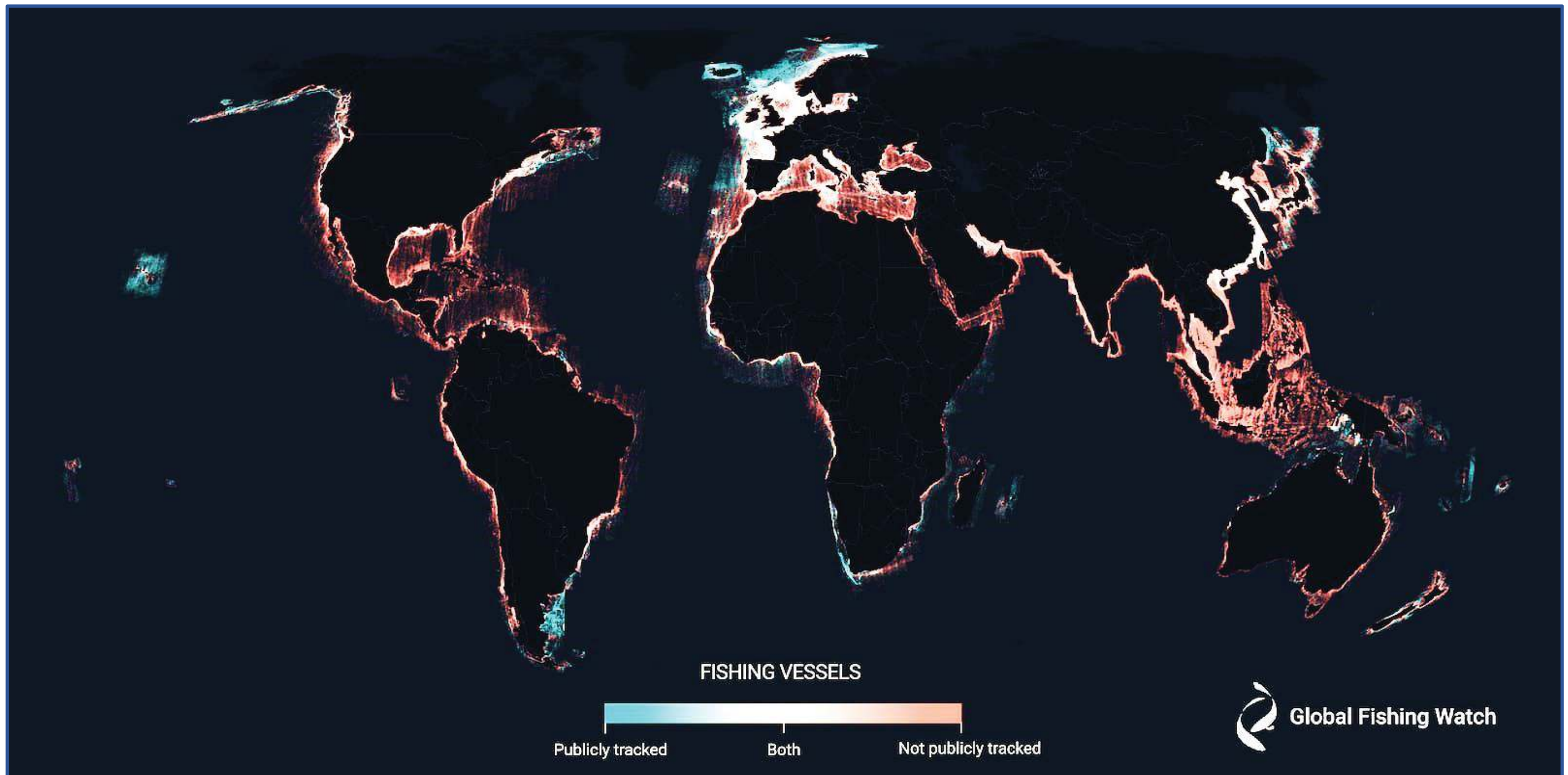


SOURCE DES DONNÉES

Statbel, 2023
(Direction générale Statistiques
– Statistics Belgium)

SOURCE DE LA CARTE

<https://www.atlas-belgique.be/index.php/fr/atlas-numerique/>

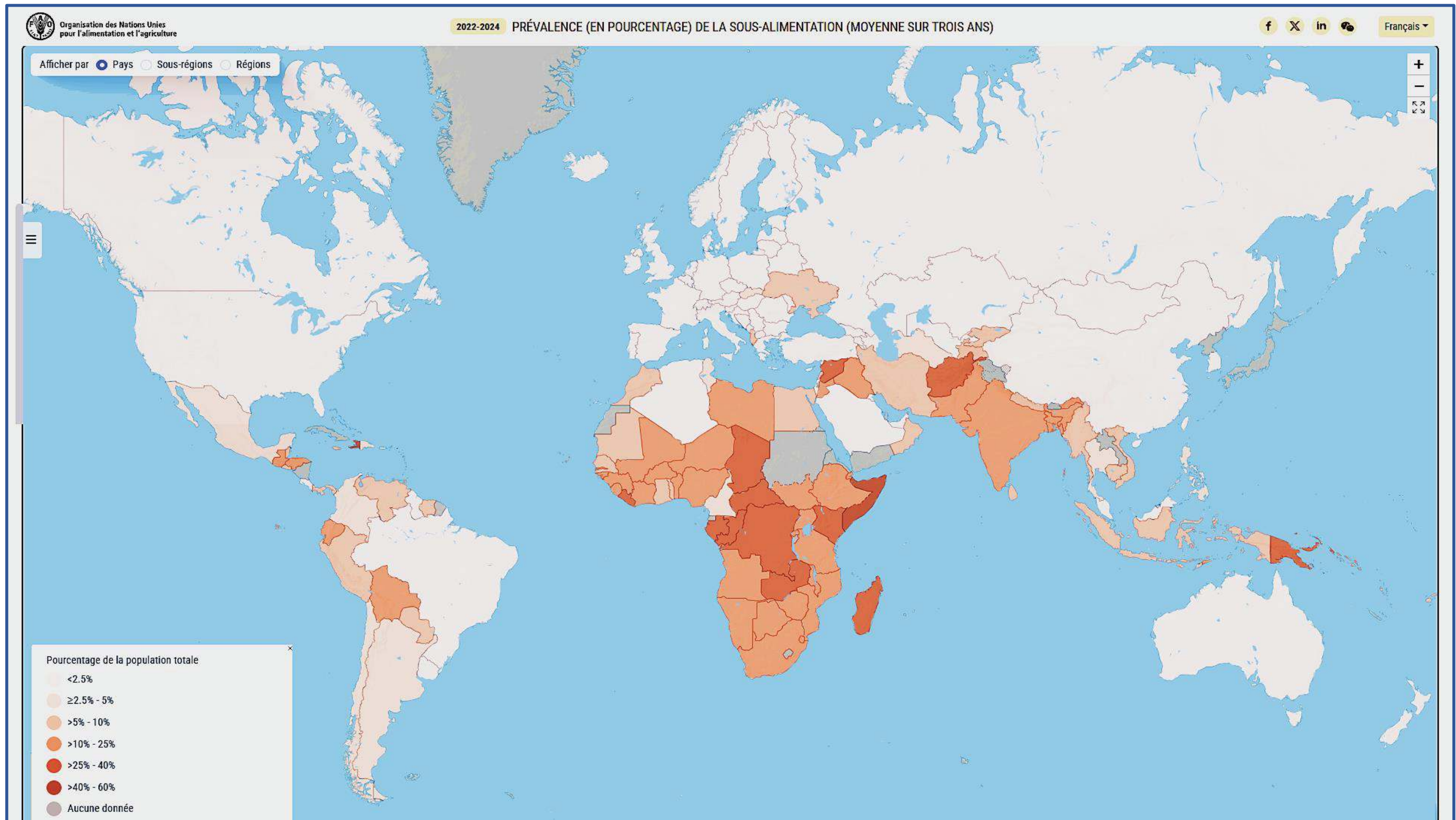
**SOURCE DES DONNÉES**

F-S. Paolo, D. Kroodsma, J. Raynor et al., *Satellite mapping reveals extensive industrial activity at sea*, *Nature* 625, 85–91 (2024)
<https://doi.org/10.1038/s41586-023-06825-8>

**SOURCE DE LA CARTE**

J. Raynor, 2024, *We used AI and satellite imagery to map ocean activities that take place out of sight, including fishing, shipping and energy development*

<https://theconversation.com/we-used-ai-and-satellite-imagery-to-map-ocean-activities-that-take-place-out-of-sight-including-fishing-shipping-and-energy-development-219367>

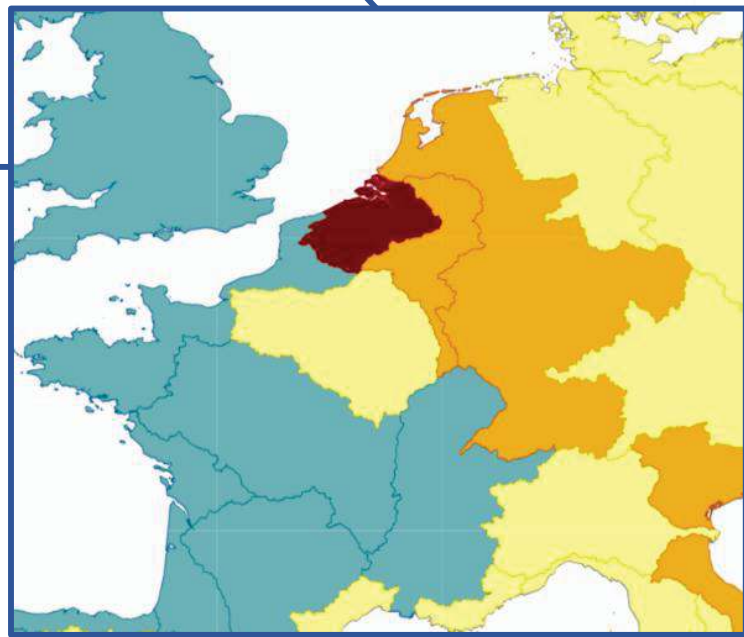
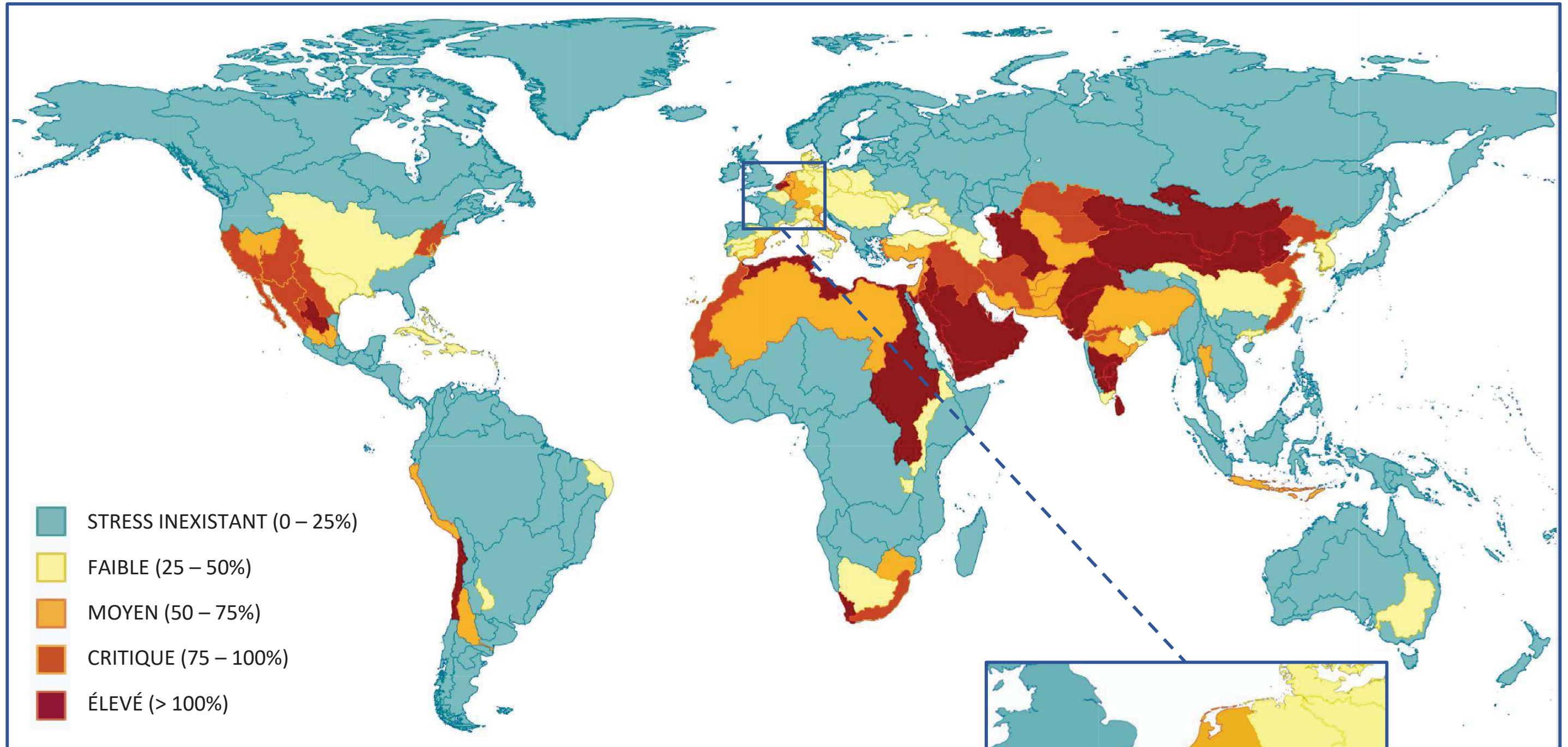


SOURCE DES DONNÉES

FAO (Organisation des Nations Unies pour l'alimentation et l'agriculture), 2024

SOURCE DE LA CARTE

<https://www.fao.org/interactive/hunger-map/fr/>



SOURCE DES DONNÉES

FAO, 2024, Base de données AQUASTAT. Organisation des Nations Unies pour l'alimentation et l'agriculture
<https://data.apps.fao.org/aquastat/?lang=en>



SOURCE DE LA CARTE

FAO, 2024, Progrès relatifs aux niveaux de stress hydrique
<https://www.unwater.org/publications/progress-level-water-stress-2024-update>